

SmartBox NG - Wall

Keeping your guests' valuables secure!

SmartBox NG features sleek, classic styling; advanced digital electronics; solid steel construction; anti-tamper labyrinths; and user-friendly audit software. Its simple operation makes it the most user-friendly digital code safe on the market.

Standard Features

- Two solid steel bolt locking mechanisms
- Large LED display and keypad
- Internal LED light
- ADA compliant audible keypad
- 4-digit guest code
- Battery backup
- Battery auto-check and low battery warning

Security Features

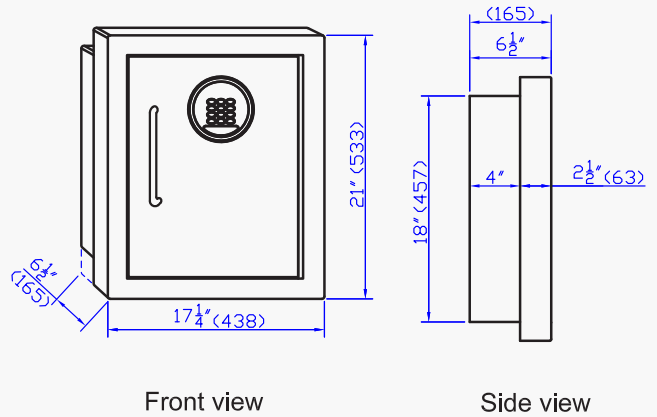
- Emergency opening with Override Unit
- Override Unit downloads last 400 operations
- Anti-tamper construction enhances security and offers protection against manipulation

Optional Accessories/Features

- Custom Door Color*
- Custom Logo Interior Carpet*



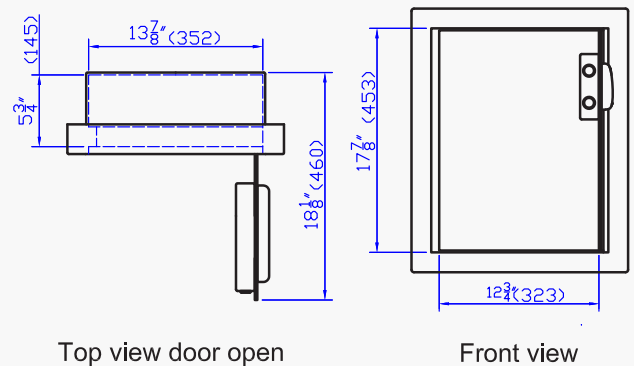
External dimensions



Front view

Side view

Inner sizes and the available dimensions with door open



Top view door open

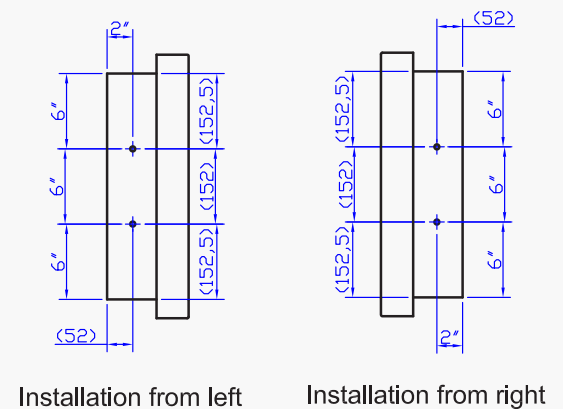
Front view

Technical Specifications

	SmartBox NG Wall
Capacity (liters / cubic feet)	34.83L / 1.23Cu.Ft
Dimensions HxWxD (inches) Depth measured to faceplate (mm)	21 x 17.25 x 6.5 533 x 438 x 165
Door Hinge	Wall
Interior Carpet Liner	Yes
Net Weight (lbs / kgs)	44 / 19.95
Gauge of Steel (Door / Body)	14 gauge / 6 gauge
Internal LED Light	Yes
Battery	4 AA alkaline batteries
Certification	ISO9001-2000 / CE / ROHS

*Only available on orders of 100 units or more

Installation (The dimensions are from outside wall)



Installation from left

Installation from right