

# SmartBox NG - Drawer

Keeping your guests' valuables secure!

SmartBox NG features sleek, classic styling; advanced digital electronics; solid steel construction; anti-tamper labyrinths; and user-friendly audit software. Its simple operation makes it the most user-friendly digital code safe on the market.

## Standard Features

- Two solid steel bolt locking mechanisms
- Large LED display and keypad
- Internal LED light
- ADA compliant audible keypad
- 4-digit guest code
- Battery backup
- Battery auto-check and low battery warning

## Security Features

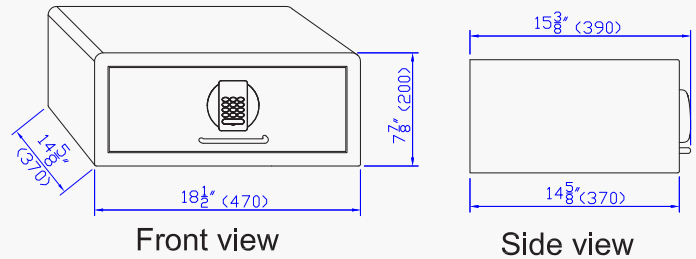
- Emergency opening with Override Unit
- Override Unit downloads last 400 operations
- Anti-tamper construction enhances security and offers protection against manipulation

## Optional Accessories/Features

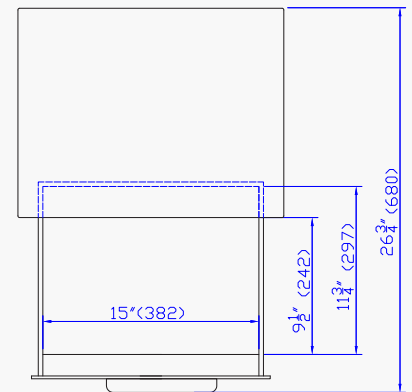
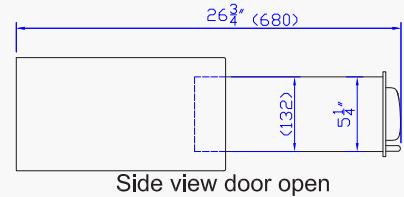
- Custom Door Color\*
- Custom Logo Interior Carpet\*
- Pedestal
- Security Cable



## External dimensions



## Inner sizes and the available dimensions with door open

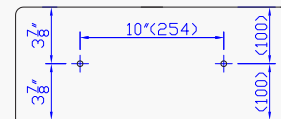


## Technical Specifications

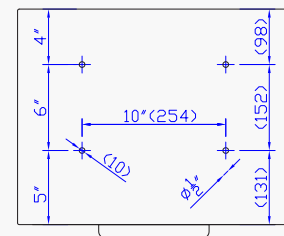
	SmartBox NG Drawer
Capacity (liters / cubic feet)	21.8L / 0.77Cu.Ft
Dimensions HxWxD (inches) Depth measured to faceplate (mm)	7.87 x 18.5 x 15.375 200 x 470 x 390
Door Hinge	Drawer
Interior Carpet Liner	Yes
Net Weight (lbs / kgs)	31 / 14
Gauge of Steel (Door / Body)	14 gauge / 6 gauge
Internal LED Light	Yes
Battery	4 AA alkaline batteries
Certification	ISO9001-2000 / CE / ROHS

\*Only available on orders of 100 units or more

## Installation (The dimensions are from outside wall)



## Installation from back



## Installation from bottom